

## Product overview

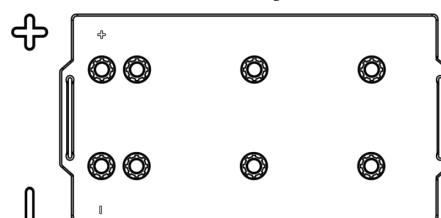
Batteries for Trucks, Buses, Construction, Agriculture

### EndurancePRO EFB EX2253



Part number	EX2253
Technology	EFB
EAN/GTIN	3661024036702
Voltage	12 V
Capacity	225.0 Ah
CCA	1150 A
Length	518 mm
Width	274 mm
Height	240 mm
Box size	D06
Polarity	ETN 3
Terminal Type	EN taper post
Hold Down	B0
Weights (subject of variation)	60.10 kg

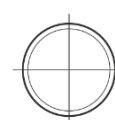
#### Polarity



#### Terminal Type



Positive Terminal



Negative Terminal

#### Hold Down



Design, features and specifications are subject to change without notice. We disclaim any representation or warranty, express or implied, concerning the data or recommendations, and in no event shall be liable for any loss or damage claimed to have arisen as a result. Some products may not be available in your local market.