



genesisTM
NP

NP33-12R
NP33-12RFR

*Sealed Rechargeable
Lead-Acid Battery*

12V, 33Ah

Specifications

- **NOMINAL VOLTAGE:** 12V
- **NOMINAL CAPACITY:**

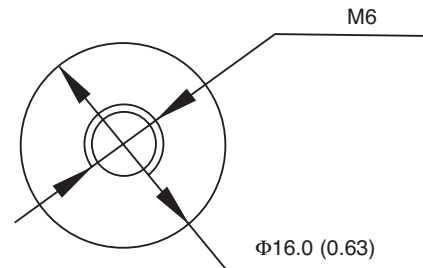
20 hr. rate of 1.65A to 10.5V	33.0Ah
10 hr. rate of 2.97A to 10.5V	29.7Ah
5 hr. rate of 5.28A to 10.2V	26.4Ah
1 hr. rate of 19.8A to 9.60V	19.8Ah
- **WEIGHT (approx.):** 24.0 pounds (10.9kgs)
- **ENERGY DENSITY (20 hr. rate):** 1.6 WH/cubic inch (98.8 WH/liter)
- **SPECIFIC ENERGY (20 hr. rate):** 16.5 WH/pound (36.2 WH/kg)
- **INTERNAL RESISTANCE OF CHARGED BATTERY:** 8.7 milliohms (approx.)
- **MAXIMUM DISCHARGE CURRENT WITH STANDARD TERMINALS:** 150 amperes
- **MAXIMUM SHORT-DURATION DISCHARGE CURRENT:** 500 amperes
- **OPERATING TEMPERATURE RANGE:**

CHARGE	5°F to 122°F
	(-15°C to 50°C)
DISCHARGE	-4°F to 140°F
	(-20°C to 60°C)
- **CHARGE RETENTION (shelf life) at 68°F (20°C):**

1 month	97%
3 months	91%
6 months	85%
- **LIFE EXPECTANCY:**

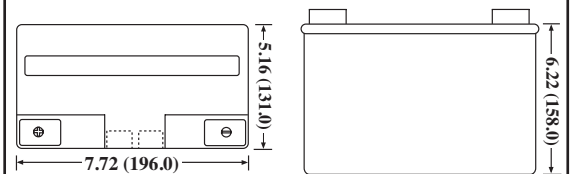
STANDBY USE	3 to 5 years
CYCLE USE (approx.):	
100% depth of discharge	250 cycles
50% depth of discharge	550 cycles
30% depth of discharge	1200 cycles
- **SEALED CONSTRUCTION:** Can be operated in any position without leakage
- **STANDARD TERMINAL:** Receptacle M6 or Bolt
- **HOUSING MATERIAL:** PP Resin
- **OPTIONAL:** Container and cover made from Flame Retardant PP (UL94-V0/L.O.I.>28%)

Terminal



DIMENSIONS: MM (INCHES)

Dimensions

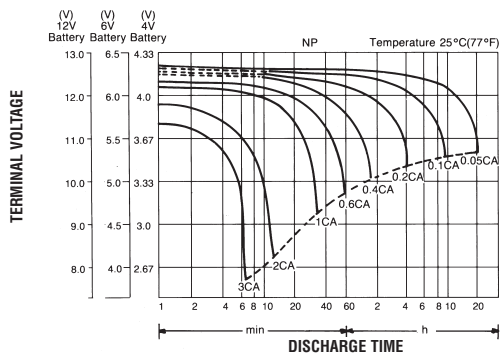


DIMENSIONS: INCHES (MM)

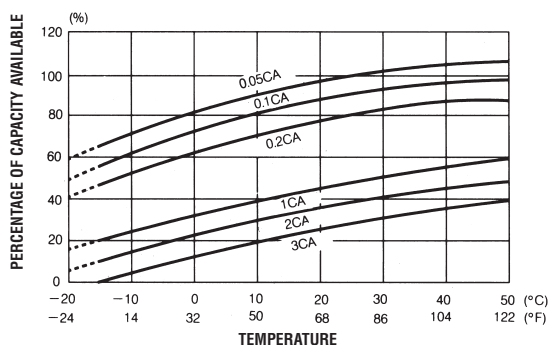
UL listing pending - File No MH16464



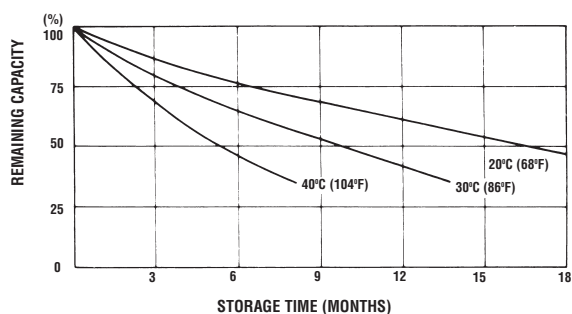
DISCHARGE CHARACTERISTIC CURVES AT 25°C (77°F)



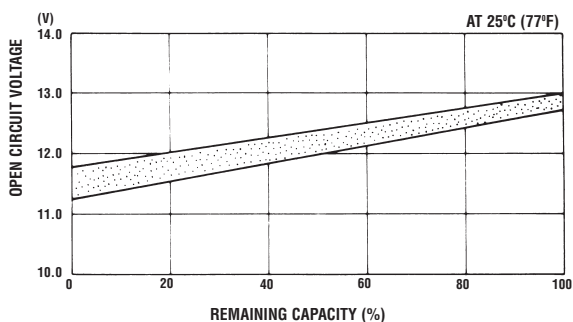
TEMPERATURE EFFECTS IN RELATION TO BATTERY CAPACITY



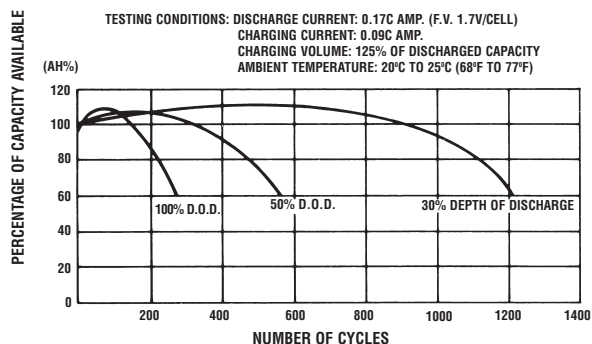
SELF DISCHARGE CHARACTERISTICS



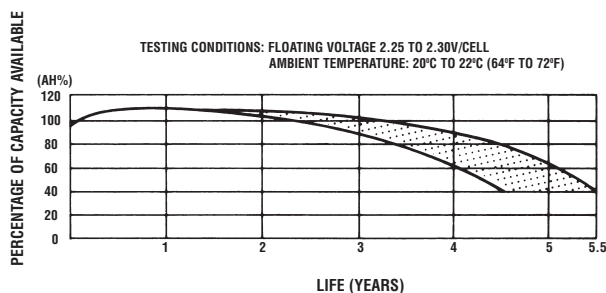
OPEN CIRCUIT VOLTAGE VS REMAINING CAPACITY



CYCLE SERVICE LIFE IN RELATION TO DEPTH OF DISCHARGE



FLOAT SERVICE LIFE



When the battery will be used by current in excess of 3C, consult with EnerSys prior to use.

CHARGING METHODS (At 20°C)

Cycle use: Maximum charging current 0.25C
Charging voltage 14.4 to 15.0V
Standby use: Float charging voltage 13.50 to 13.80V

CAUTION •Avoid short circuit
•Do not charge in a sealed container



EnerSys
P.O. Box 14145
Reading, PA 19612-4145
USA
Tel: +1-610-208-1991
+1-800-538-3627

EnerSys EMEA
Brussels, Belgium
Tel: +32 (0)2 247 94 47
EnerSys Asia
Guangdong, China
Tel: +86 755 2689 3639

Represented by:



© 2006 EnerSys. All rights reserved.
Trademarks and logos are the property of
EnerSys and its affiliates unless otherwise noted.